



VISATEC
PART OF ISEC

VT GTL RH

gripper system

brochure



VT GTL RH gripper system

Compact, powerful and watertight gripper tool for harsh environments and heavy duty applications

Features

- ▶ Watertight up to 50 m
- ▶ 180° rotation
- ▶ High gripping force
- ▶ Various tool attachments for maximum flexibility
- ▶ Carbon pole endlessly extendable

Applications

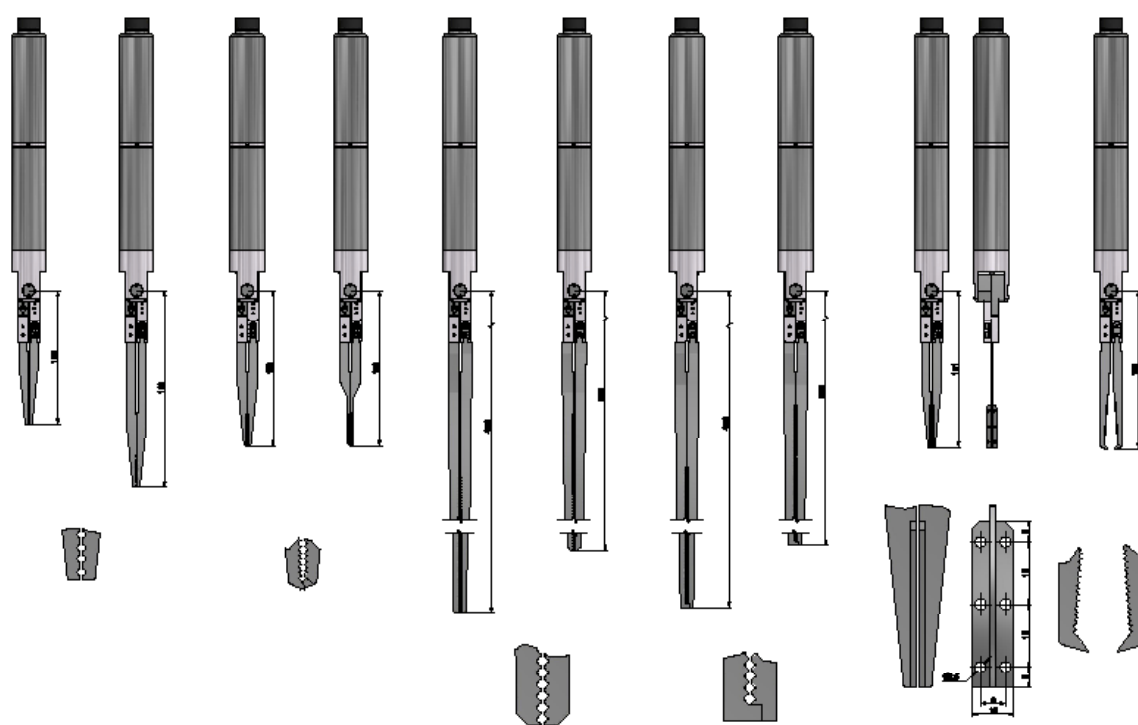
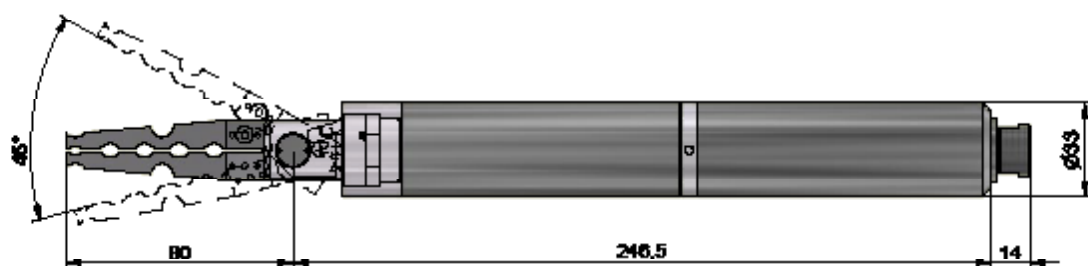
- ▶ Ideal for recovering heavy foreign bodies and positioning of parts
- ▶ Different, exchangeable gripper tool attachments makes it flexible for individual applications

Technical specifications - VT GTL RH gripper system

This document is for general information only,
please consult the system manual for detailed specifications

Housing	stainless steel and anodized aluminum
Dimension (ø x L)	33x340.5 mm
Weight	0.72 kg
Watertight	5 bar / 50 m
Roation angle	180°
Apeture angle	45°
Gripping force	~ 50 N inside / ~ 20 N outside
Power supply	---
Operating temperature water	---
Operating temperature air	---
Radiation tolerant	---
Total dose	---
Optionals	different jaws, carbon pole
Features	---

* unit in mm



Setup

Possible combinations



1 Gripper



VT GTL RH

2 Cabling



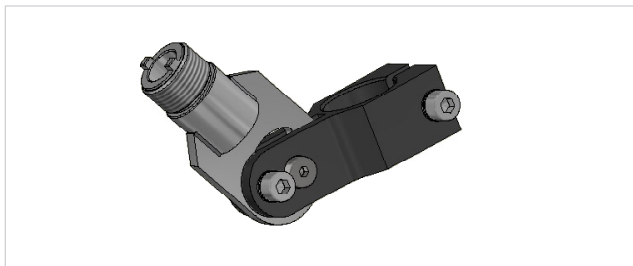
Control unit integrated in
VT GTL RH SKT

3 Remote control



Remote control
VT GTL RH FB

Accessories



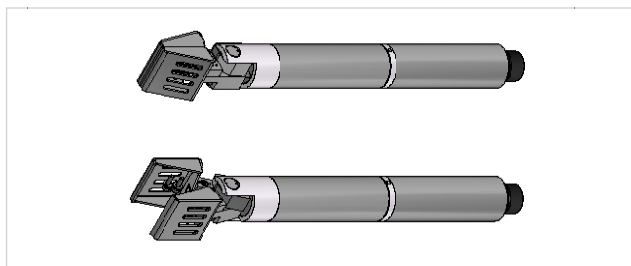
Quick release coupling
Ideal for deployment of various retrieval tools



VT GH Vario tool holder
Variable railing bracket with stainless steel adapter for connecting the camera to 29 or 42 mm diameter carbon poles



VT 29 carbon poles - 29 or 42 mm diameter
Connectable carbon poles for deployment of cameras and tools
- standard lengths are 1 and 2 m



VT GTL with interchangeable pliers
Many different special and interchangeable grippers are available for the gripper unit



Manhole holder
Versatile positioner for 29 or 42 mm carbon poles

ISEC Visatec GmbH
Gewerbepark 7
87477 Sulzberg
Telephone +49 8376 9215-0
info@visatec.de
visatec.de